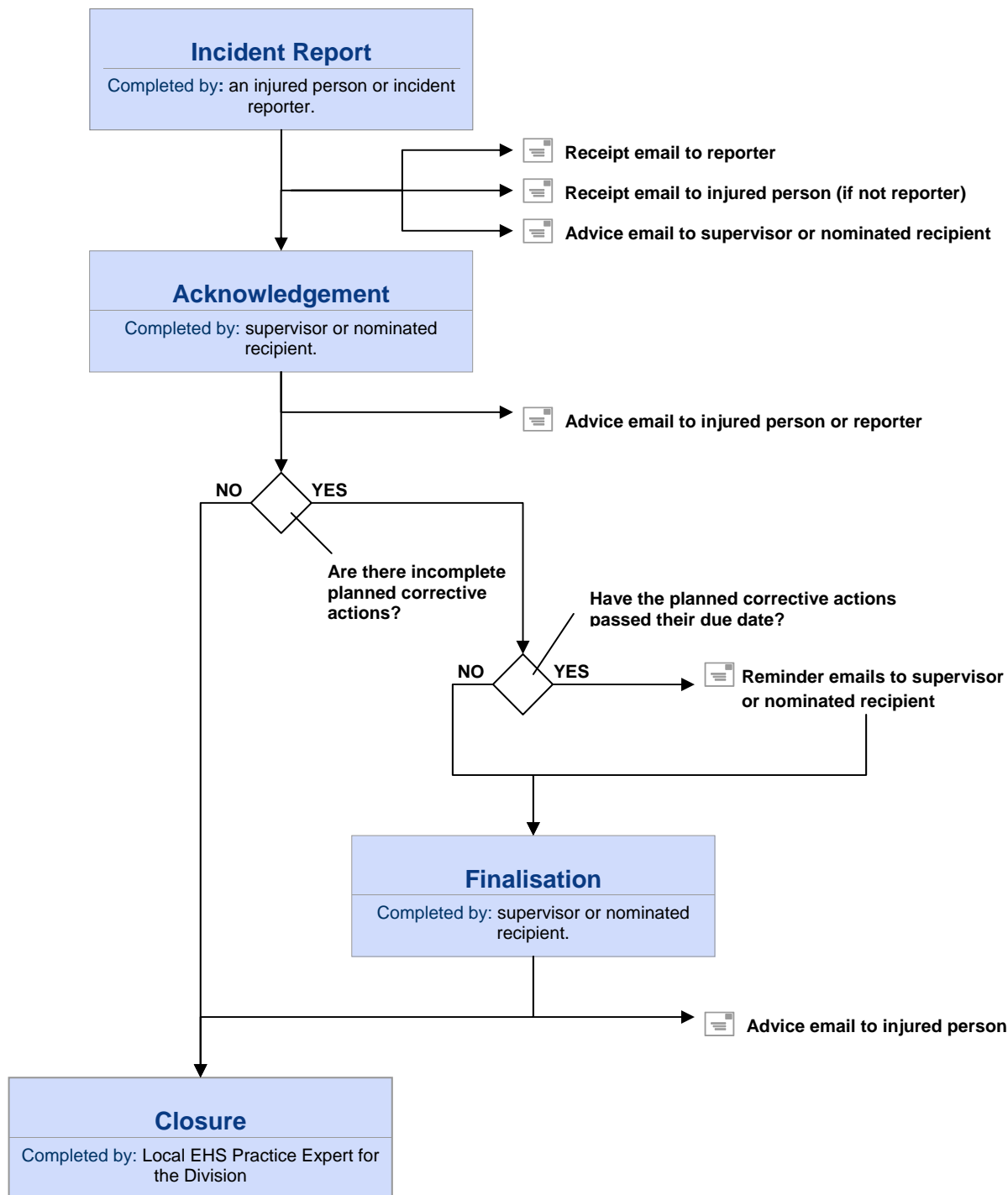


## Context of Themis Environment, Health & Safety (EHS) Incident Reporting

The EHS Incident Reporting module in Themis is a part of a larger process of recording and responding to EHS incidents at the University – for a chart of this larger process, refer to [http://safety.unimelb.edu.au/docs/Incident\\_FlowChart.pdf](http://safety.unimelb.edu.au/docs/Incident_FlowChart.pdf).

## Steps in the Themis EHS Incident Reporting Process



## Other Quick Reference Cards on Themis EHS Incident Reporting:

- Entering an EHS Incident Report
- Acknowledging & Finalising EHS Incident Reports
- Monitoring and Reviewing EHS Incident Reports

## General Guidance on EHS Incident Reporting

For general guidance on EHS incident reporting, refer to <http://safety.unimelb.edu.au/tools/incident/>.