

### Step 1 Login to GoldFFX

Go to Chemical Management web page:  
[Chemical management](#)

Select the *GoldFFX icon*  
[University network login required]

ACCESS GOLDFFX

### Step 2 Select the SDS



**Gold SDS**  
Extensive SDS from GoldFFX in multiple languages

**Vendor SDS**  
SDS exactly as provided by the manufacturer/supplier

**Mini SDS**  
Concise graphical SDS from ChemWatch. Colour coded by level of risk, in multiple languages

Select SDS type from the  
SDS AND LABELS control panel

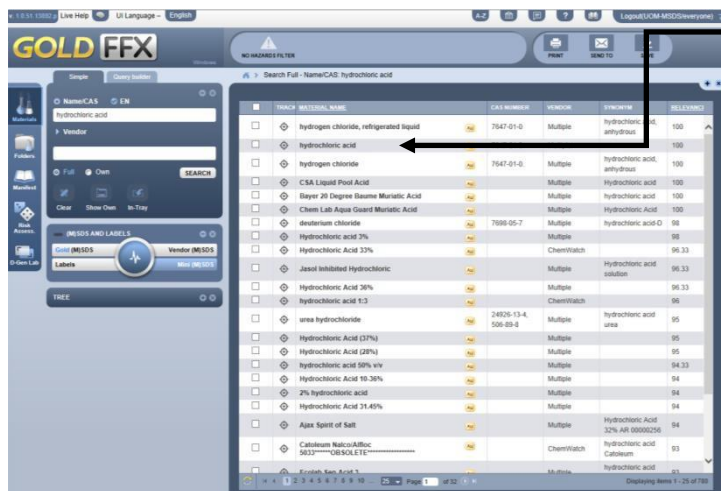
### Step 3 Search for the Chemical



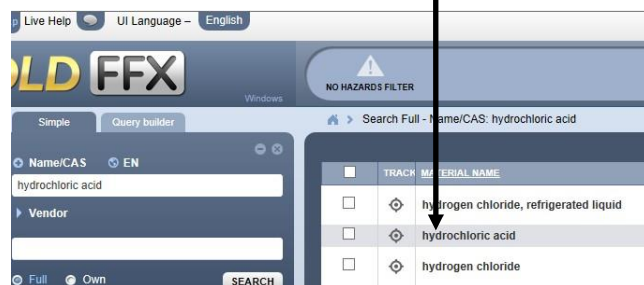
Search for the chemical by *Name/CAS*  
(CAS Number) and then click *Search*

SEARCH

## Step 4 Select the Chemical



Select the desired chemical in the search results by clicking its title

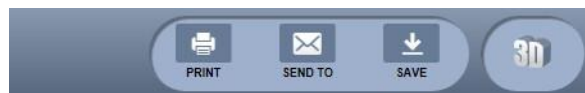


## Step 5 Print, Email or Save



Example of a Mini SDS

Print, Email or Save



## MORE HELP



On-line GoldFFX – sends an email “Help & Support” enquiry to ChemWatch



On-line GoldFFX eLearning (videos)



On-line GoldFFX help



On-line GoldFFX manual

Chemical Management webpage:

<https://safety.unimelb.edu.au/safety-topics/chemical-management-and-hazardous-waste/chemical-management>

Consult your local Health and Safety Business Partner: <https://safety.unimelb.edu.au/health-and-safety-contacts>